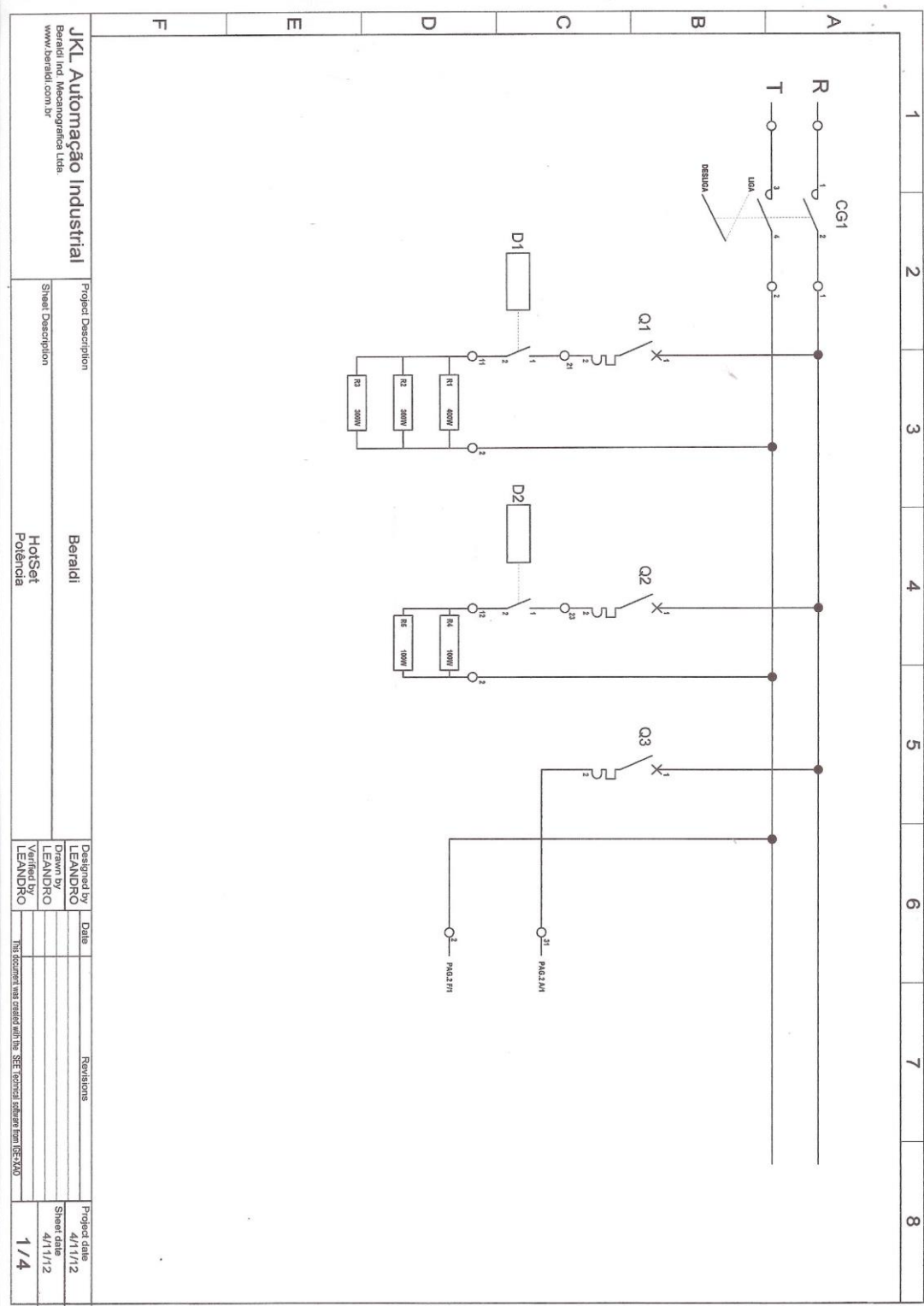


MANUAL ELÉTRICO

HOTSET



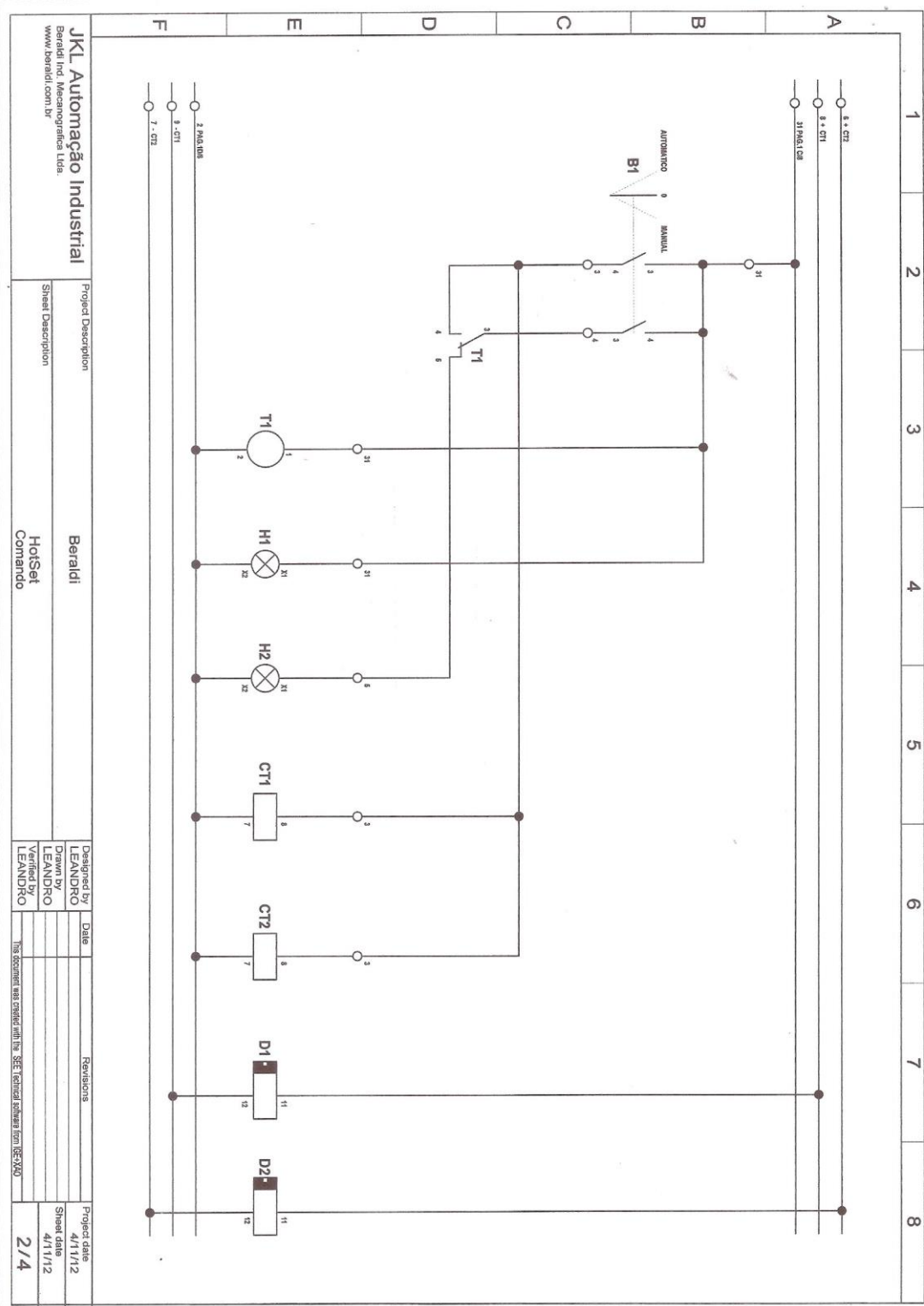
JKL Automação Industrial
 Beraldi Ind. Mecanografica Ltda
 www.beraldi.com.br

Project Description: **Beraldi**
 Sheet Description: **HoSet Potencia**

Designed by	Date	Revisions	Project date
LEANDRO			4/11/12
Drawn by			Sheet date
LEANDRO			4/11/12
Verified by			
LEANDRO			

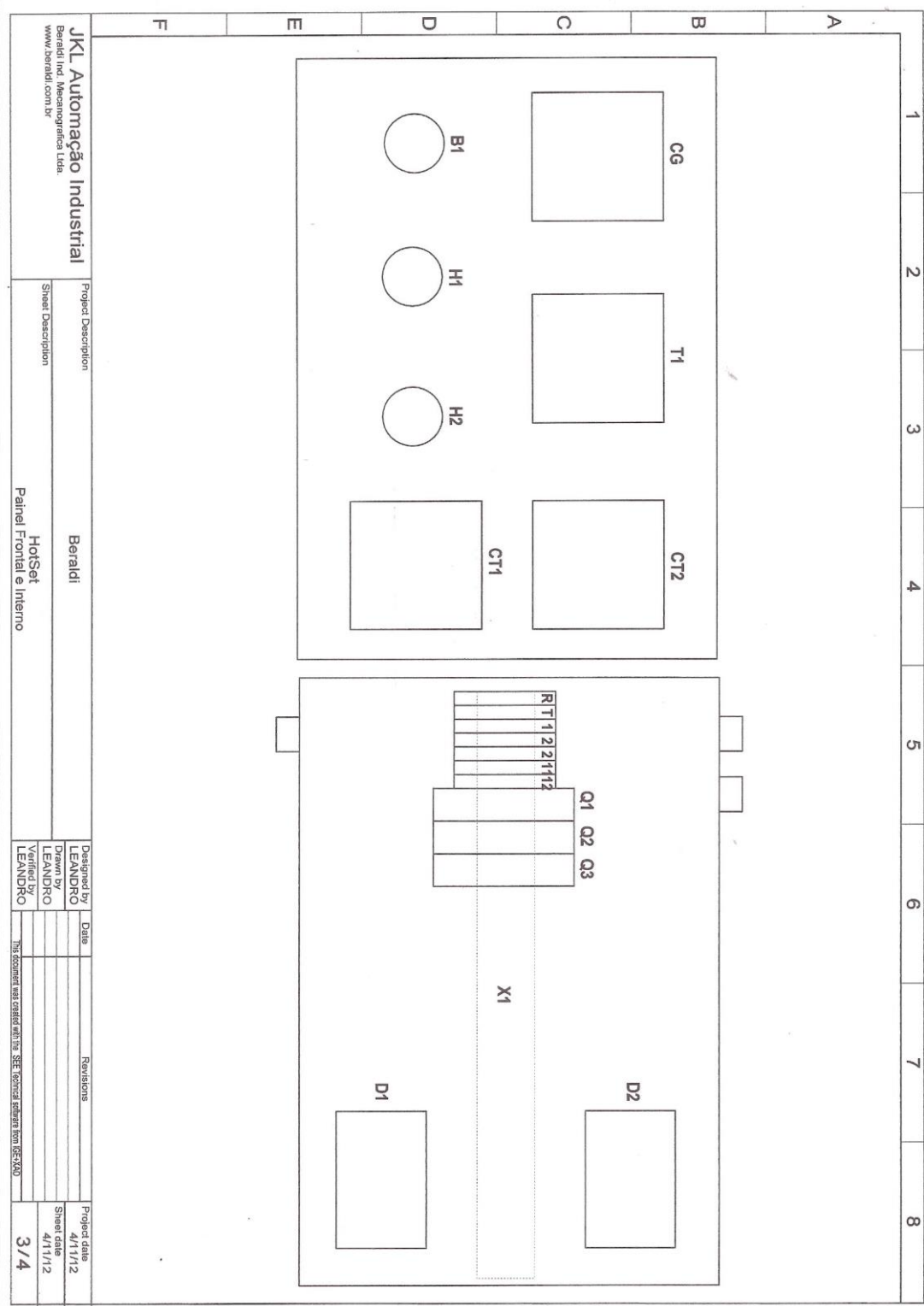
This document was created with the SEE Electrical software from DEE-2000

1/4



JKL Automação Industrial
 Berardi Ind. Mecanografica Ltda.
 www.berardi.com.br

Project Description		Berardi	
Sheet Description		Holset Comando	
Designed by	LEANDRO	Date	
Drawn by	LEANDRO	Revisions	
Verified by	LEANDRO	Project date	4/11/12
		Sheet date	4/11/12
This document was created with the SEE1 technical software from DEE-2X40		2/4	



JKL Automação Industrial
 Beraldi Ind. Mecanografica Ltda.
 www.beraldi.com.br

Project Description: **Beraldi**
 Sheet Description: **Ho/Se/ Panel Frontal e Interno**

Designed by	Date	Revisions	Project date
LEANDRO			4/11/12
Drawn by			Sheet date
LEANDRO			4/11/12
Verified by			
LEANDRO			
This document was copied with the SEE (optical scanner) from 08E-260			
			3/4

	1	2	3	4	5	6	7	8	
A	<p>B1-BOTÃO DE 3 POSIÇÕES FIXAS CG-CHAVE GERAL=A2-16A CT1-CONTROLADOR DE TEMPERATURA=K49E HCRR CT2-CONTROLADOR DE TEMPERATURA=K49E HCRR D1-RELE DE ESTADO SÓLIDO 25A D2-RELE DE ESTADO SÓLIDO 25A H1-PAINEL LIGADO=L20-DR2-R BRANCA H2-AUTOMATICO LIGADO L20-DR2-R VERMELHA Q1-DIUNTOR 10A (RESISTÊNCIA) Q2-DIUNTOR 4A (RESISTÊNCIA) Q3-DIUNTOR 4A (COMANDO) R1-RESISTÊNCIA 400W R2-RESISTÊNCIA 300W R3-RESISTÊNCIA 300W R4-RESISTÊNCIA 100W R5-RESISTÊNCIA 100W X1-CONECTORES T1-PROGRAMADOR HORÁRIO=RTSTL-20</p>								
B									
C									
D									
E									
F	<p>CONSUMO 1200W - 6A - 220V - 60HZ</p>								
JKL Automação Industrial		Project Description		Beraldi		Designed by		Date	
Beraldi Ind. Mecanográfica Ltda www.beraldi.com.br		Sheet Description		HotSet Descrição		Drawn by LEANDRO		4/11/12	
						Verified by LEANDRO		Sheet date 4/11/12	
								Project date 4/12	
								4/4	
<small>This document was created with the SEE technical software from 1987-2000</small>									